

LUXURY
LIVING AT
AFFORDABLE
PRICES



WESTVILLAGE GROUP

WEST
VILLAGE
APTS
800
NORTH
48TH
ST

3 BED

BROWN STREET

48TH STREET



WEST VILLAGE SITE PLAN

FIND YOUR PERFECT SPOT
IN OUR URBAN OASIS

STARTING AT \$1760/MONTH
(PLUS UTILITIES) FOR 1600
SQUARE FEET LIVING SPACE.
2 FULL BATHROOMS AND ONE
CAR PRIVATE GARAGE INCLUDED.

215-877-7733 ☎
WEST VILLAGE APARTMENTS 📍
800 N 48TH ST, PHILADELPHIA, PA. 19139
LIFE@WESTVILLAGEGROUP.COM ✉
WESTVILLAGEGROUP.COM 🌐

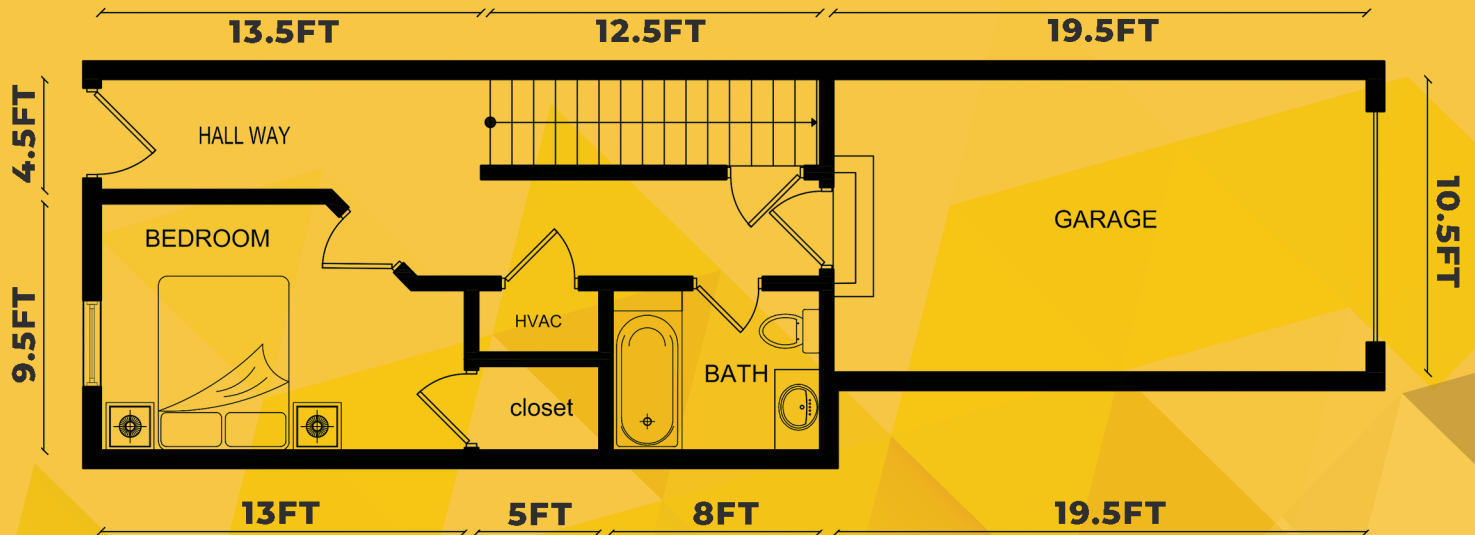
**LUXURY
LIVING AT
AFFORDABLE
PRICES**



WESTVILLAGE GROUP

3 BEDROOM APARTMENT

1ST FLOOR PLAN



PARK YOUR CAR IN THE ATTACHED GARAGE AND ENTER YOUR 3 BEDROOM APARTMENT. THE FIRST BEDROOM WITH A LARGE CLOSET IS LOCATED ON THE GROUND FLOOR. ALONG WITH A FULL BATHROOM. THERE IS ALSO AMPLE STORAGE CLOSET IN THE HALLWAY.

EACH APARTMENT IS BI-LEVEL, "TOWN HOME STYLE" WITH SLEEK LAMINATE HARDWOOD FLOORS AND TILE THROUGH-OUT.



**3 BEDROOM
FLOOR ONE.**

SPACIOUS FLOOR PLANS

**STARTING AT \$1760/MONTH
(PLUS UTILITIES) FOR 1600
SQUARE FEET LIVING SPACE.
2 FULL BATHROOMS AND ONE
CAR PRIVATE GARAGE INCLUDED.**

215-877-7733

WEST VILLAGE APARTMENTS

800 N 48TH ST, PHILADELPHIA. PA. 19139

LIFE@WESTVILLAGEGROUP.COM

WESTVILLAGEGROUP.COM

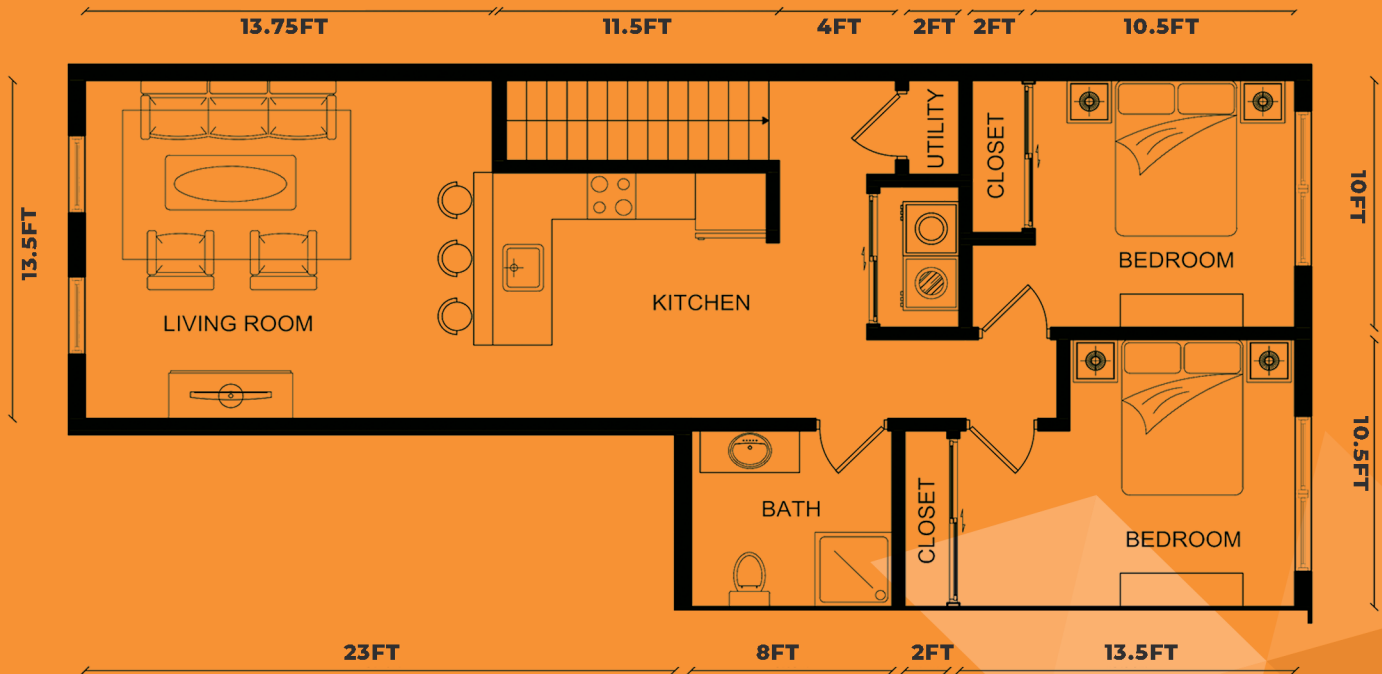
**LUXURY
LIVING AT
AFFORDABLE
PRICES**



WESTVILLAGE GROUP

**3 BEDROOM
APARTMENT**

2ND FLOOR PLAN



- STAINLESS STEEL APPLIANCES
- CUSTOME TILED BATHROOMS
- GRANITE COUNTERTOPS
- HE FRONT LOAD WASHER
- HE FRONT LOAD DRYER
- DISHWASHER
- GARBAGE DISPOSAL
- ICEMAKER



SPACIOUS FLOOR PLANS

THE SECOND FLOOR OPENS UP TO YOUR MODERN KITCHEN AND LIVING ROOM. YOU WILL PASS A FULL BATHROOM AND FRONT LOADING WASHER AND DRYER AS YOU WALK TO THE 2 BEDROOMS AT THE BACK OF THE 2ND FLOOR.

215-877-7733 ☎

WEST VILLAGE APARTMENTS 📍

800 N 48TH ST, PHILADELPHIA. PA. 19139

LIFE@WESTVILLAGEGROUP.COM ✉

WESTVILLAGEGROUP.COM 🌐